

SPECIFICATION SHEET

Product Name: Lit c 1

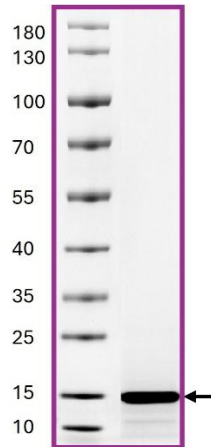
Catalog # LC01-A32H

Product Description: Recombinant *Litchi chinensis* (Lychee) allergen Lit c 1 was expressed in *E. coli* and purified by affinity chromatography using a His tag.

Storage and Stability: Store at -20°C. To avoid repeated handling and multiple freeze/thaw cycles aliquot diluted product into smaller quantities.

Data for a Sample Lot:

Alternate Names : None
Source : *Litchi chinensis* (Lychee)
Accession Numbers : Genbank: [AY049013](https://www.ncbi.nlm.nih.gov/nuccore/AY049013)
Host : *E. coli*
Formulation : Recombinant protein stored in 1X PBS
Molecular weight : Calculated: ~15.1 kDa
Observed ~15 kDa
Purity : The purity was determined to be ≥90% by densitometry
Gel Image



References

1. García-Orozco KD, et. al. Molecular characterization of arginine kinase, an allergen from the shrimp *Litopenaeus vannamei*. *Int Arch Allergy Immunol.* 2007;144(1):23-8. doi: 10.1159/000102610. Epub 2007 May 11. PMID: 17496423.